



F&F Filipowski sp. j.  
ul. Konstytucyjna 79/81  
95-200 Pabianice, POLAND  
tel/fax 48 42 2270974  
e-mail: fif@fif.com.pl

## PO-405 24V TIMING RELAYS lagged-pulse time relays



5 19 0 8 3 1 2 1 5 9 2 5 3 2

www.fif.com.pl

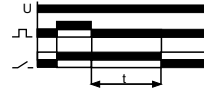
F&F products are covered by a 24 months warranty from date of purchase

### PURPOSE

Lagged-pulse time relay PO-405 24V is devised to support the power supply of the controlled receiver for a specified period of time after decay of the control voltage, e.g. in bathroom ventilation systems in which the upkeep of the fan operation (activated along with the lighting) is required for a specified period of time after turning off the accompanying lighting.

### FUNCTIONING

Supply of relay is signaling by shine of green LED. The application of control voltage S to the relay causes its activation and the resulting supply of voltage R to the controlled receiver. After decay of the control voltage, the operation of the receiving device is kept for the support time  $t$  (preset with the potentiometer). After the  $t$  time has been counted down, the controlled receiver is turned off automatically. If control voltage S is re-supplied before the lapse of the preset time, the relay will repeat its operational sequence.



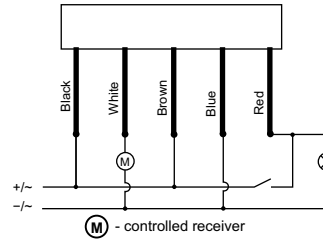
### ASSEMBLY

1. Take OFF the power.
2. Put on the relay to substrate by 2 screw.
3. Connect to system with marks.
4. By knob set activation time.

### TECHNICAL DATA

supply	24V AC/DC
current load	<10A
joint	1Z
activation time	0,5±15min
power supply indicator	green LED
operation mode indicator	red LED
power consumption	0,56W
working temperature	-25+50°C
connection	OMY 5×0,5mm <sup>2</sup> l=0,5m
dimensions	70×50×25mm
fixing	two screw to substrate

### WIRING DIAGRAM



A090605