

**TIME RELAY**  
(programmable)

**PCS-533**  
UNI

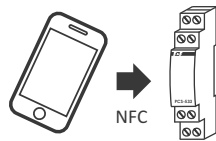
**WARRANTY.** The F&F products are covered by a warranty of the 24 months from the date of purchase. Effective only with proof of purchase. Contact your dealer or directly with us. More information how to make a complaint can be found on the website: [www.fif.com.pl/reklamacje](http://www.fif.com.pl/reklamacje)



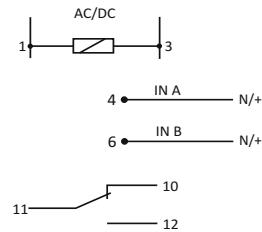
Do not dispose of this device in the trash along with other waste! According to the Law on Waste, electro coming from households free of charge and can give any amount to up to that end point of collection, as well as to store the occasion of the purchase of new equipment (in accordance with the principle of old-for-new, regardless of brand). Electro thrown in the trash or abandoned in nature, pose a threat to the environment and human health.

**Purpose**

PCS-533 is a programmable time relay that allows you to turn on, turn off and switch the relay in a function of time and in a function of control signals issued by the two inputs. The program is created by the user using a dedicated, free app for Android smartphone. Program is loaded into the relay wirelessly via the NFC wireless communication.



**Connection scheme**



**Technical data**

power supply	9÷265V AC/DC
load current	16A
contact	separated 1xNO/NC
control pulse current	<1mA
time setting ranges	0.1s÷24h
activation delay of averse functions	<50ms
power supply indicator	green LED
contacts state signalling	red LED
power consumption	0.8W
working temperature	-25÷50°C
terminal	2.5mm <sup>2</sup> screw terminals
tightening torque	0.4Nm
dimensions	1 module (18mm)
mounting	on TH-35 rail
ingress protection	IP20

**PCS-533 Configurator**

- \* Preparing the program as a list of subsequent commands. Each command is symbolized by the icon. Pressing the tile with the command allows you to edit the details (for example time of the action, expected input signal etc.).
- \* Easily add, move or delete commands of the program (by dragging tiles).
- \* A set of templates (in the form of diagrams) - ready programs with PCS-516 and PCS-517 relay functions.
- \* Saving and reading programs to a file. The ability to share programs through e-mail, Bluetooth, network drives and soon.
- \* Automatic program backup - each relay has its own ID. The application maintains a full history of programs uploaded to the relay.
- \* Mass programming mode - the ability to upload a program to multiple relays (even without power supply connection).



**Operating and programming manual**

Detailed instructions in PDF is available to download from the website:

[pcs.fif.com.pl](http://pcs.fif.com.pl)

**App**

